

The best beds in Eastern Africa

Wildlife Safari guests stay at the finest hotels, resorts, safari lodges & camps throughout Africa. There are hundreds of hotels and lodges of varying standards but only a select few meet our strict criteria of location, facilities, cuisine and service to make the Wildlife Safari preferred list. Unlike almost every other tour operator to Africa, Wildlife Safari does not request or accept marketing fees from any hotel to be featured in our outstanding safaris.

SERENA HOTELS operate an extensive collection of sixteen city hotels, safari lodges, tented camps and beach resorts throughout Kenya, Tanzania, Uganda & Rwanda. The **Nairobi Serena Hotel** is the flagship of the group and is our favourite hotel in our "home" city. Serena was established during the early days of tourism in Kenya so their safari lodges in **Amboseli, Samburu and Masai Mara** wildlife sanctuaries are sited in the best locations for game viewing. **Mountain Lodge** built on stilts deep in the heart of the Mount Kenya forest is a unique "tree hotel" while **Serena Beach Hotel** is our favourite resort on the Indian Ocean, just north of Mombasa. Serena safari lodges in Tanzania are also situated in the best locations on the Great Rift Valley escarpment at Lake Manyara, the Ngorongoro Crater rim and the heart of the Serengeti savannah. **Kirawira Camp** in the Grumeti area of the western Serengeti is on the wildebeest migration path while the **Zanzibar Serena Inn** is housed within a resored historic building.

Wildlife Safari enjoys a long relationship with Serena, we are also a significant shareholder, so Wildlife Safari guests receive the warmest welcome, best rooms and outstanding service.



Ngorongoro Serena Lodge



Nairobi Serena Hotel



Amboseli Serena Lodge



Mara Serena Lodge



Serengeti Serena Lodge

The best beds in Eastern Africa

Our city hotels are centrally located with excellent facilities, our resorts have unique designs that suit their locations while our safari lodges & camps are found in the best game viewing areas in the finest wildlife sanctuaries in Africa and we regularly review our list of preferred properties.

FAIRMONT HOTELS acquired three iconic tourism venues in Kenya, spent considerable funds to rebuild and restore them to their original glory, and better, with an experienced team at each property. **The Norfolk Hotel** first opened on Christmas Day 1904 and has welcomed royalty, rich and famous guests for over a century. This flagship hotel has been expertly restored to better than its original splendour and is the perfect starting point for your safari. **The Mount Kenya Safari Club** sits on the Equator facing the snow capped summit of Mount Kenya, the second highest peak in Africa. Founded by William Holden, the Club was once Hollywood's playground in Africa and Fairmont has transformed it into the finest country club resort on the continent. **The Mara Safari Club** is the last word in luxury "under canvas" safari camps, built along an ox bow of the Talek river in the western Masai Mara, Africa's finest wildlife sanctuary. This is the ideal base for unsurpassed wildlife viewing on safari.

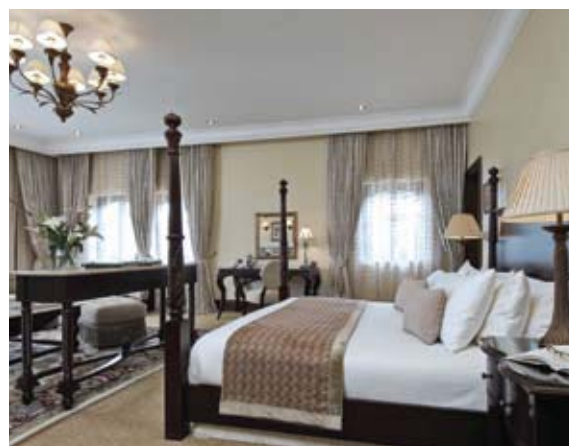
The Fairmont Zanzibar is a luxury beachfront resort on the eastern side of Zanzibar island and the perfect place to spend three, or more, days relaxing after "The Fairmont Safari" and enjoying the water sports and spa facilities.



The Fairmont Zanzibar



Mount Kenya Safari Club



Mara Safari Club



The Fairmont Norfolk Hotel

The best beds in southern Africa

Southern Africa has a larger choice of hotels, lodges, camps and resorts than Eastern Africa, ranging from well priced, value for money all the way to the way to world class, "six star" luxury with rates to match. Wildlife Safari features a selection of properties from "four star" all the way to the best of the best. However, its impossible to include every suitable hotel so while we feature our preferred properties on these pages, we also have excellent access and rates to others that may better suit the particular location or individual client. Please contact Wildlife Safari for assistance.

Here are Wildlife Safari's five favourite, and most popular properties in South Africa. The Melrose Arch Hotel in Johannesburg's northern suburbs is a luxury "hip" hotel offering an outstanding guest experience with some unique twists. The Palace of the Lost City at Sun City is an iconic resort hotel, famous globally, and any visit to South Africa is incomplete without a stay at this incredible hotel. We currently have three favourite Cape Town hotels, all situated at the V & A Waterfront. The V & A Hotel, the original hotel, still retains its charm and inobtrusive service. The Table Bay Hotel is a large world class hotel with all the facilities with views to both Table Mountain and Atlantic Ocean. The Cape Grace Hotel is a small, exclusive hotel that is more like a private club than hotel. Wildlife Safari has a much larger selection of hotels, lodges and resorts throughout South Africa, call us for details.



The Palace of the Lost City



Table Bay Hotel



V & A Hotel



Cape Grace Hotel



Melrose Arch Hotel

The best beds in southern Africa

Botswana has many small safari camps and lodges throughout the country, with varying facilities and standards. The Wildlife Safari “top four” lodges and camps in Botswana are located in four diverse game viewing areas. All four camps are small and exclusive, with excellent cuisine and outstanding personal service. Each camp also offers its own unique wildlife viewing experience with Botswana’s finest team of guides sharing their pristine wilderness with every guest. Wildlife Safari also has access to many other excellent lodges and camps in Botswana.

Camp Okavango, a tented camp on remote Ngaraha island on the heart of the pristine Okavango delta, offers game viewing by canoe within the many channels of the delta.

Camp Moremi is also a tented camp on Xakanaxa lagoon within the Moremi Game Reserve, home to a diverse wildlife species population. **Chobe Game Lodge**, the only safari lodge on the Chobe River inside Chobe National Park, offers excellent game viewing by large boat or open vehicles. **Savute Safari Lodge** is a series of glass and timber chalets overlooking a natural waterhole in an area known for “big cats”.



Camp Okavango



Camp Moremi



Savute Safari Lodge



Chobe Game Lodge